



AI-Powered Imaging: New Horizons in Fighting Cancer

Investor Presentation
June 2026

MEDIAN TECHNOLOGIES



ALMDT
EURONEXT
GROWTH

IMPORTANT NOTICE – YOU MUST READ THE FOLLOWING BEFORE CONTINUING

This presentation contains forward-looking statements within the meaning of applicable securities laws. We may also make written or oral forward-looking statements in our publicly available financial information, press releases and other written materials and in oral statements made by our officers, directors or employees to third parties. These statements are not historical facts. They include projections and estimates as well as the assumptions on which these are based, statements concerning projects, objectives, intentions, and expectations with respect to future financial results, events, operations, services, product development and potential, and statements regarding future events and economic performance.

These forward-looking statements can often be identified by the words "expects," "anticipates," "believes," "intends," "estimates," "plans" "can," "contemplate," "could," "is designed to," "may," "achieve," "potential," "objective," "target," "project," "strategy," "predict," "forecast," "opportunity," "goal," or the negative of these, and any other similar expressions are intended to identify forward-looking statements.

Although Median's management believes that these forward-looking statements are reasonable, investors are cautioned that forward-looking statements are subject to numerous risks and uncertainties, many of which are difficult to predict and generally beyond the control of Median Technologies, that could cause actual results and events to differ materially from those expressed in, or implied or projected by, the forward-looking information and statements.

These risks and, uncertainties and assumptions include among other things, unexpected regulatory actions or delays, or government regulation generally, that could affect the availability or commercial potential of Median's products and services, the fact that Median's products and services may not be commercially successful; authorities' decisions regarding whether and when to approve a product candidate; the uncertainties inherent in research and development including post marketing, unexpected safety, quality or manufacturing issues; competition in general; risks associated with intellectual property and any related litigation and the ultimate outcome of such litigation, and volatile economic and market conditions, and the impact that global crises may have on Median Technologies, its customers, suppliers, vendors, and other business partners.

All forward-looking statements in this presentation are based on information available to Median Technologies as of the date of the presentation. Median Technologies does not undertake to update any forward-looking information or statements, subject to applicable regulations, in particular Articles 223-1 et seq. of the General Regulation of the French Autorité des Marchés Financiers. In light of these risks, uncertainties and assumptions, you should not place undue reliance on any forward-looking statements contained herein.

Proven and experienced management team



Fredrik Brag

Chief Executive Officer,
Founder, Board Member



Oran Muduroglu

Executive Chairman of the Board,
Named President of Median
eyonis Inc.



Jean-Christophe Montigny

Chief Financial Officer



Thomas Bonnefont

Chief Operating Officer &
Chief Commercial Officer of
Median eyonis



Nicolas Dano

Chief Operating Officer &
Chief Commercial Officer of
Median iCRO



Chrystel Brun

Chief of HR and
Administration Officer

MANAGEMENT AND BOARD EXTENSIVE PRIOR EXPERIENCE



BOARD OF DIRECTORS

Oran Muduroglu

Fredrik Brag

Tim Haines

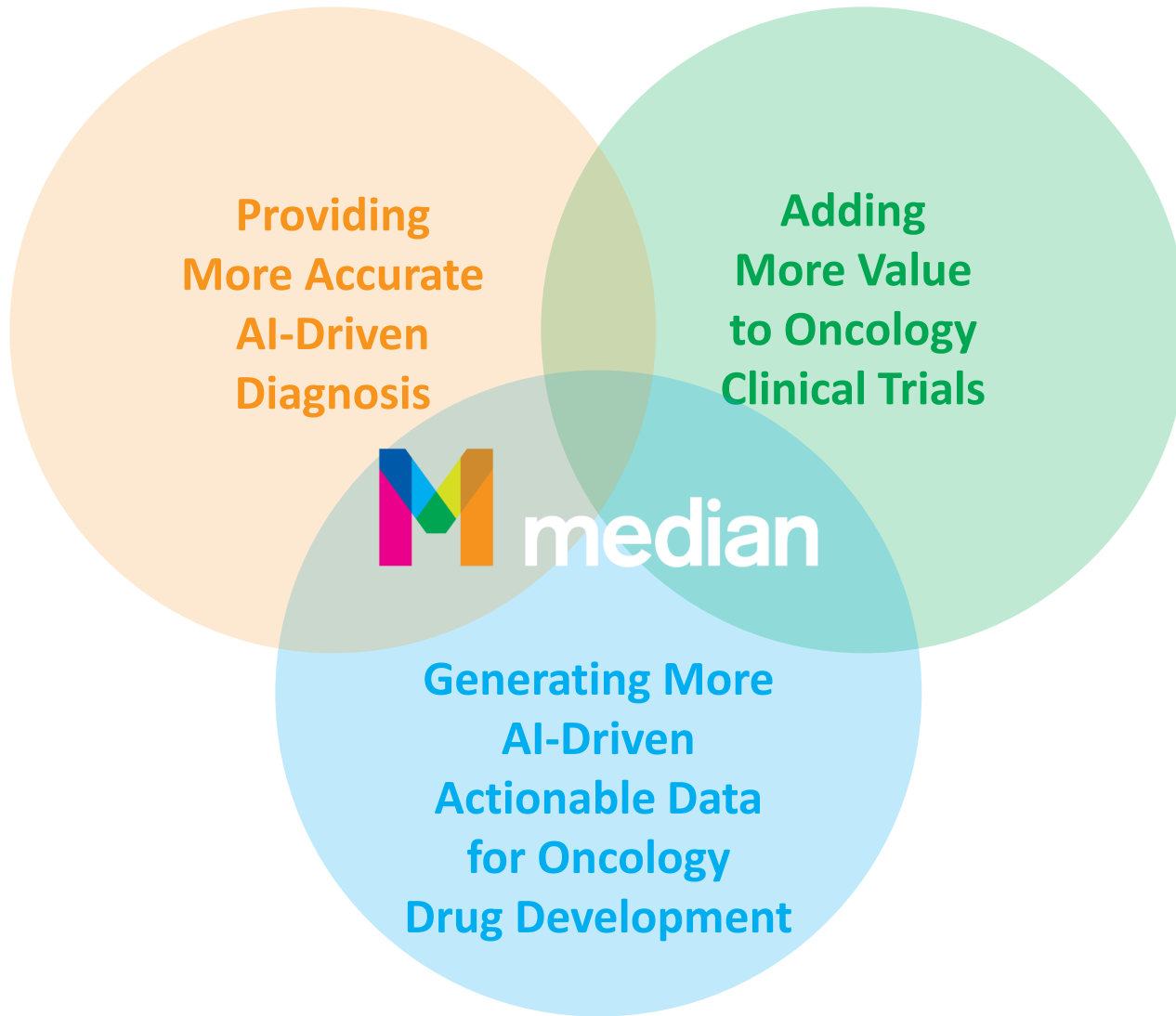
Kapil Dhingra

Oern Stuge

Ben McDonald

Didric Cederholm





Providing Invaluable Clinical Insights Where Others Only See Images

Leveraging Proprietary AI, Computer Vision, and Signal Processing Technologies to Develop Imaging Tests and Services for Unmet Needs in Oncology



Helping Save the
Lives of Patients
Through
Innovation

Global Business – People Everywhere Need Better Answers to Cancer

France

Headquarters

U.S. + China

Subsidiaries

200+

Employees

€23.4M

2025 Revenue

Strong Scientific and Commercial Validation

7K+

Site Network

150+

Publications &
Conference Papers

340+

Clinical Studies

95+

Biopharma
Clients

2 of 3

Top Oncology
Pharmas are Clients

Leading Imaging Solutions



End-to-End CADe/CADx
Software As Medical Devices







Imaging Services for
Oncology Clinical Trials



End-to-End CADe/CADx Software as Medical Devices (SaMDs)





Enabling earlier detection & characterization of cancer with unprecedented performance – lung cancer as initial market

-  Unprecedented accuracy
-  Helps save patients' lives
-  Reduces unnecessary procedures & healthcare spend
-  Optimizes radiologist's time with simple workflows



Imaging Services for Oncology Clinical Trials

Empowering biopharma to leverage AI, ML, data mining, and radiomics in clinical development strategy to:

-  Select better patients
-  Predict responses to therapy
-  Accurately monitor disease progression
-  Rapidly assess safety and efficacy

Imaging Solutions Make an Impact Throughout the Entire Patient Journey



**High Commercial
Launch Readiness in Lung Cancer**

- Achieved FDA 510(k) clearance & filed CE marking submission
- Named Oran Muduroglu as President of Median eyonis Inc. to lead the U.S. launch and scale-up, building on strong foundation of preparation
- Signed non-exclusive distribution agreement with Tempus
- Achieved best-in-class clinical results in pivotal studies
- Expanded KOL network across radiology, pulmonology & thoracic oncology

iCRO

**Continued Business Momentum
& Improved Financial Profile**

- Achieved record backlog – driven by U.S. demand
- Cash flow positive in 2025⁽¹⁾
- Expanded traction with top-tier pharmas

[1] Unaudited, iCRO segment.

Successful oversubscribed €50 million capital increase

Results announced on June 3rd, 2026

- Institutional and retail investors
- Heavily oversubscribed demonstrating very strong market support
- Capital increase combining:
 - A public offering in France and a global placement to qualified institutional investors for an amount of €40 million
 - A private placement reserved to guarantors for an amount of €10 million.

Current cash runway extends through:

HY 2028

Potential upside to cash position from 12.3M warrants (as of May 27, 2026):

€44.1M

In additional gross proceeds upon full exercise
(€2.39 strike price, exercisable until January 31, 2028)

HY 2029

Intended use of the capital increase net proceeds

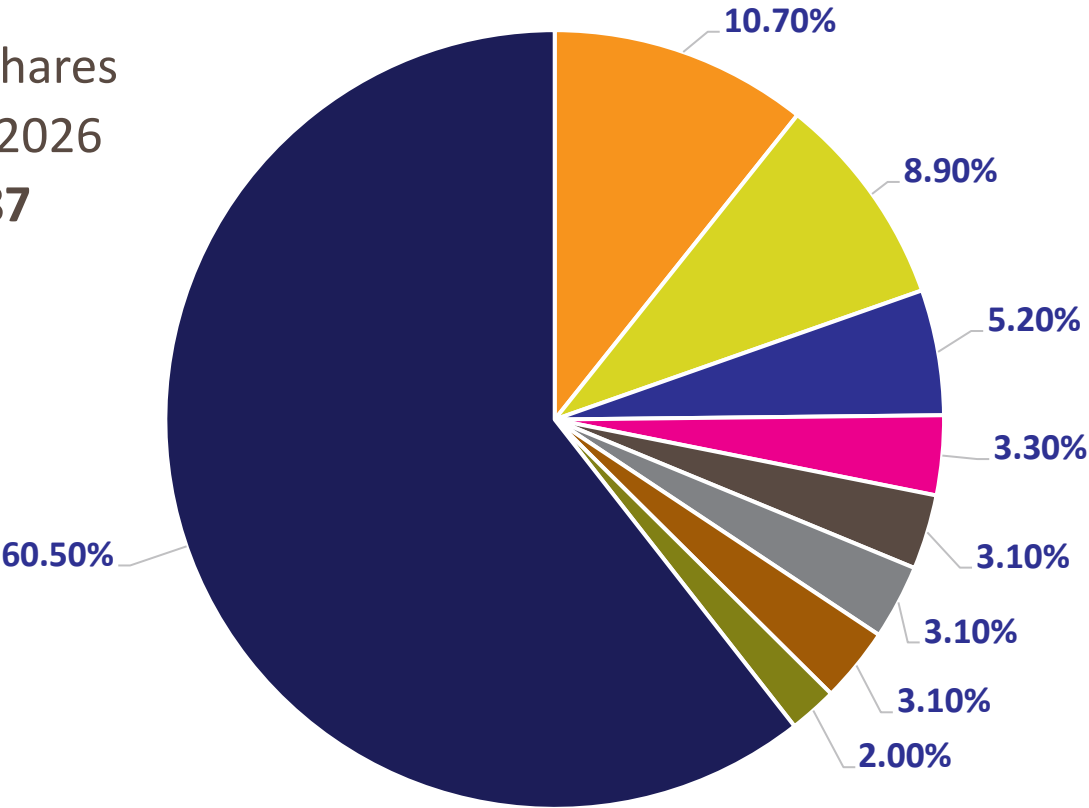
Net proceeds of the Capital Increase to be used:

- To accelerate commercialization of eyonis[®] LCS in the U.S. and launch in target European countries after CE marking achievement,
- To develop eyonis[®] for incremental cancer indications, i.e. eyonis[®] IPN and eyonis[®] HCC
- For Company's working capital and general corporate purposes.

Median's shareholding structure – Post capital increase



Outstanding shares
as of June 5, 2026
48,682,387



- Anne Helen and Fredrik Lungstrom
- Katarina Martinson AB
- Celestial Successor Fund
- Matignon Finances
- Venture
- Furui Medical Science Company
- Lion Point LP
- Canon Inc
- Free Float





AI imaging is revolutionizing cancer care

Median's next generation AI Software as Medical Devices (SaMD) can diagnose early-stage cancer when it can be cured

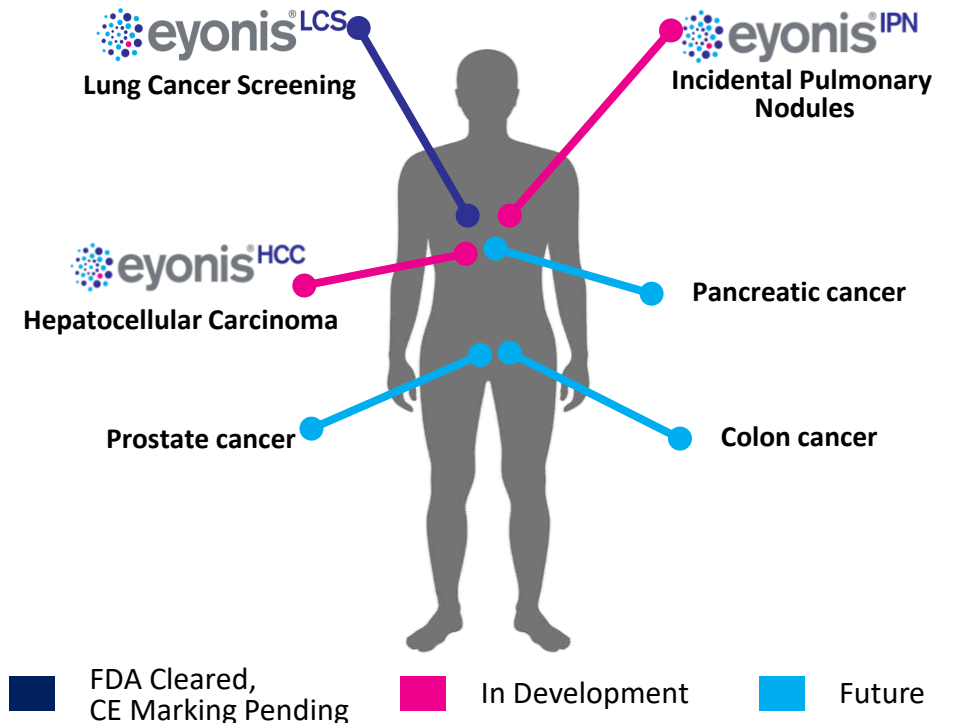


Catching the Unseen – Supporting Radiologists and Clinicians Worldwide in Screening, Early Diagnosis & Treatment of Cancer

End-to-End, AI/ML-Based CADe/CADx SaMDs

- Enabling earlier and more accurate cancer diagnosis from medical images
- Helping clinicians deliver better outcomes while reducing unnecessary procedures and lowering healthcare cost
- Detection, localization, and characterization of lesions into probably benign, suspicious, and very suspicious
- Unprecedented sensitivity and specificity versus standard of care and liquid biopsy

Widely Applicable Foundational Technology – First Commercial Opportunity in Lung Cancer Screening (LCS)



Why target lung cancer screening as eyonis' beachhead market?



#1

Cancer Killer Worldwide⁽¹⁾

18.6%

of All Lung Cancer Patients
Survive 5 years⁽²⁾

14.5M

U.S. Eligible Population⁽³⁾

19%

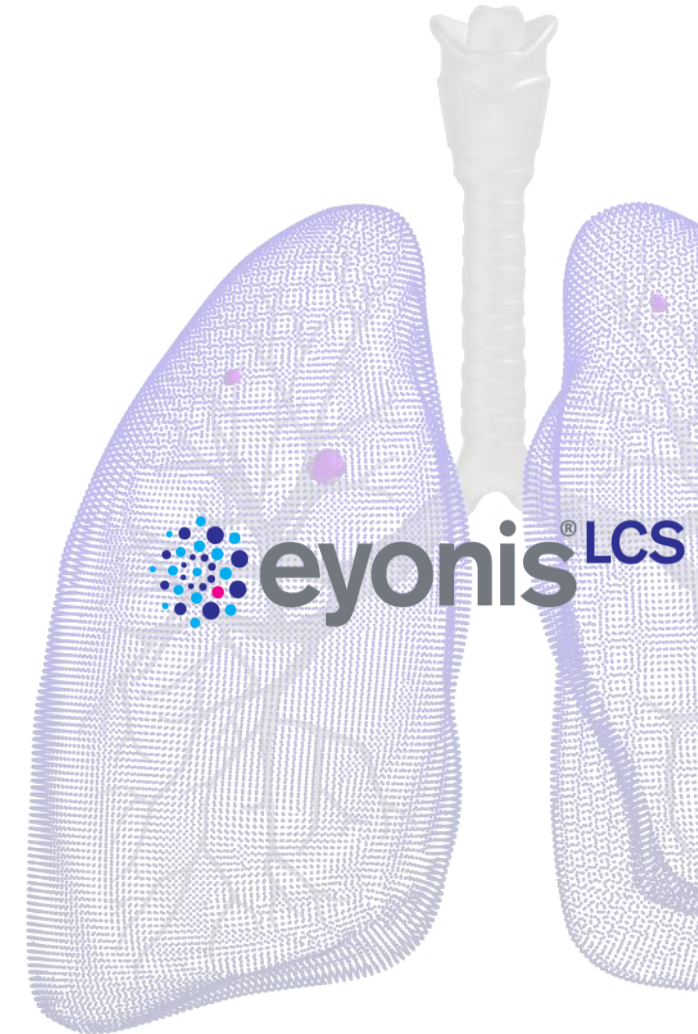
Of All Cancer Deaths:
1.8M Deaths Globally⁽¹⁾

80%

of Patients Diagnosed at
an Early Stage via LDCT
Screening Survive
20 Years⁽²⁾

\$10B

Estimated U.S. TAM⁽⁴⁾



[1] Cancer Tomorrow, IARC, Global Cancer Observatory 2022 – WHO.

[2] Mount Sinai - Lung Cancer Screening Dramatically Increases Long-term Survival Rate.

[3] USPSTF – U.S. Preventive Services Task Force 2021.

[4] Based on a \$650 per procedure reimbursement opportunity & 14.5M estimated population size.

The only FDA approved AI-based SaMD solution for LCS



The Historical Diagnostic Paradigm for LCS is Inefficient

- ✗ No end-to-end solutions to support radiologists
- ✗ LCS is done by radiologist alone or aided by detection (high false positive rate)
- ✗ No detection & characterization SaMD currently approved in the U.S. for LCS
- ✗ 2/3 false positives without eyonis LCS AI remain a key barrier to scaling LCS



- ✓ Only end-to-end solution
- ✓ Enhancing screening accuracy and efficiency

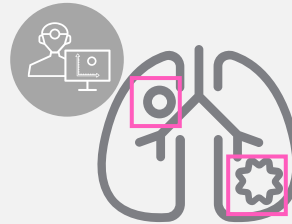
Radiologist Alone



Manual detection & diagnosis

Tedious, time consuming & error prone

Radiologist with Computer-Assisted Detection (CADe) SaMD only

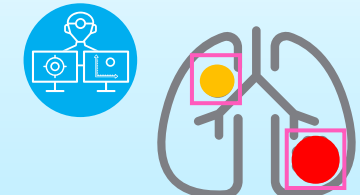


□ Detection

Manual diagnosis – one nodule at a time

High rates of false positives

Radiologist with End-to-End Computer-Assisted Detection & Diagnosis (CADe/CADx)



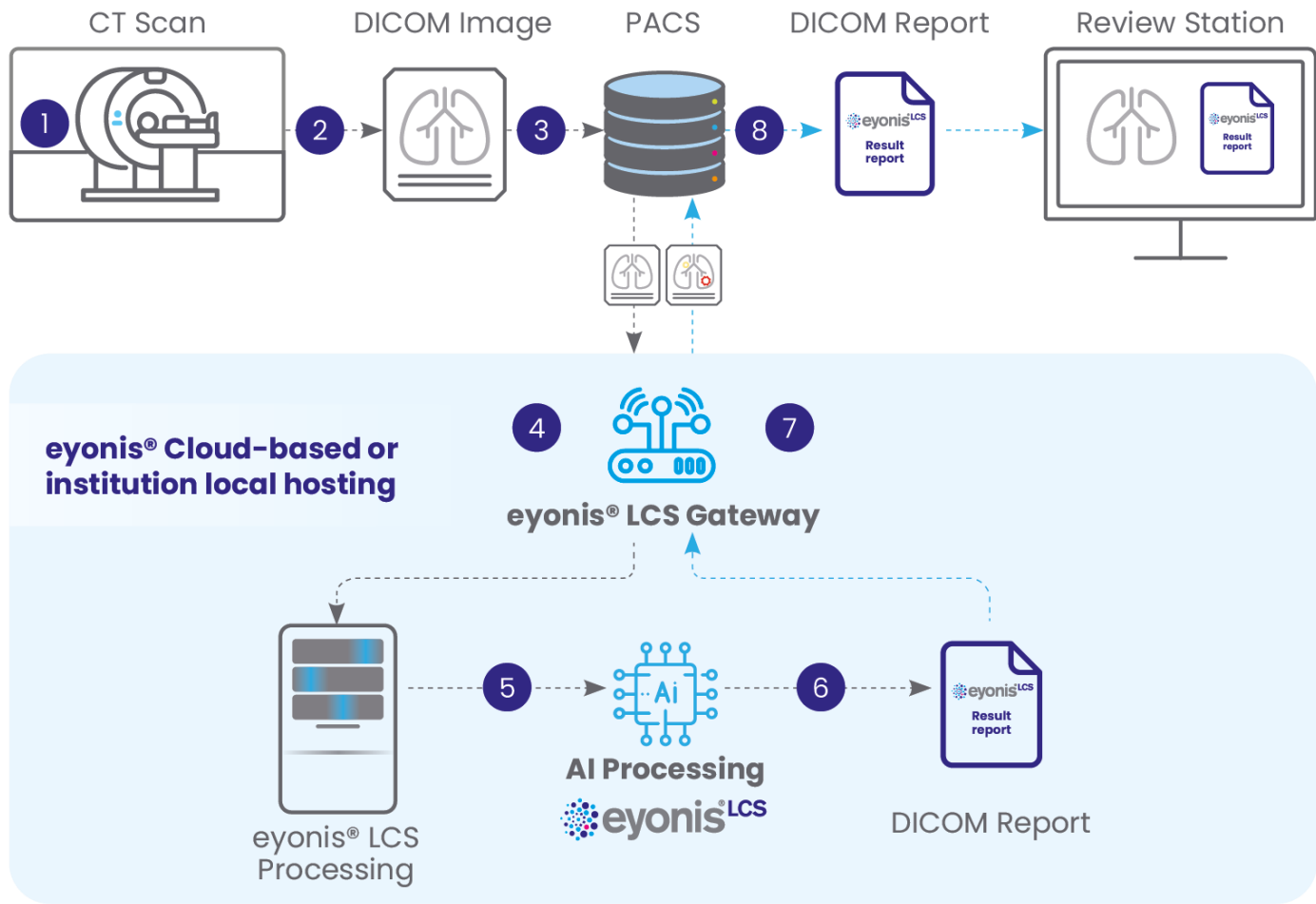
- Probably Benign
- Suspicious
- Very suspicious

No Manual Intervention

Detection & diagnosis of all nodules from probably benign to very suspicious reduce false positives by up to 2/3

Seamlessly enabling scale-up of lung cancer screening

eyonis[®]LCS Workflow



- Easy-to-use
- Optimizes radiologist's time
- Increases workflow standardization
- Compatible with any CT-scan and any PACS system
- No manual intervention
- Greater accuracy & efficiency

eyonis LCS Manufacturer Values (MV)

Performed to determine eyonis LCS performance

Evaluated on a U.S. cohort of 2,163 cases: 2,027 benign / 136 cancers, of which 66.18% were stage I

Negative Predictive Value (NPV): 99.9%

	Sensitivity TP-positive Cases Detected (Malignant)	Specificity TN-Negative Cases Detected (Benign)
 Radiologist	80.3%	76.4%
	93.3%	92.4%
	 66% False Negative Reduction	 68% False Positive Reduction

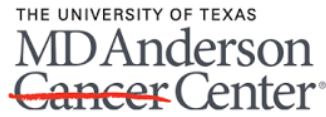
eyonis[®] LCS

- Significantly reduces false positives and false negatives (missed cancers)
- Reduces unnecessary invasive diagnostic procedures
- Allows high-confidence rule-out (screening default) for annual follow-up
- Supports high-confidence efficient rule-in (recall) pathways for at-risk patients expedited diagnostic work-up
- Saves lives with earlier lung cancer detection & characterization
- **Goal is to enable U.S. nationwide LCS at scale**

2021 American Medical Association - Cochrane Library. Jonas DE, Reuland DS, Reddy SM, et al. Screening for lung cancer with low-dose computed tomography.

Strong platform validation

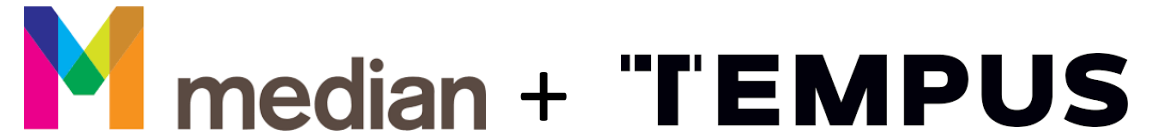
Leveraging Top U.S. & EU-based Academic Clinical Sites Involved in Pivotal Studies



23 eyonis Conference Papers, Oral Presentations, and Journal Publications since 2021



1st Distribution Agreement Signed with Tempus AI




- Integration of eyonis LCS into Tempus Pixel, an FDA-cleared, CE-marked AI-enabled solution that provides advanced analysis, tools, and automated reporting from radiology images
- Leverages Tempus' established position in oncology and AI-based precision medicine, and its strong network of healthcare providers, oncologists, and diagnostic centers
- Reinforces the clinical utility of the technology and facilitates adoption via an established enterprise workflow

Plans to broaden commercial adoption of eyonis[®] LCS by targeting additional non-exclusive distribution agreements with top-tier imaging, cloud technology & Dx partners

eyonis LCS commercial launch and scale-up in the U.S.




Oran Muduroglu to lead U.S. Commercialization

 >3 decades of experience building, engineering, and scaling enterprise imaging and workflow platforms

 medicalis / 

Stentor / 

 verily / 

 Experience leading complex national deployments requiring:

- Deep EMR and PACS interoperability
- Rigorous product development
- Disciplined enterprise sales
- Alignment with evolving reimbursement models

Key Pillars of the U.S. Commercial Strategy

Phased launch strategy for disciplined national, scalable expansion

- Detailed customer and payor mapping to prioritize regions with high lung-cancer screening volumes
- Targeting patients eligible for reimbursement
- Prospective health-economics studies initiating in 2026

Build-out of direct enterprise sales organization

- Expansion of robust U.S.-based commercial organization:
 - IT infrastructure and management
 - Clinical specialists
 - Demand generation direct sales / inside sales & IDTF
 - Collaboration with advocacy groups
 - U.S. marketing

Strategic non-exclusive distribution agreements

- Tempus partnership announced on February 12, 2026, covering U.S. and EU
- Plans to secure additional distribution collaborations with top-tier PACS, workflow and diagnostics partners

Existing reimbursement to support launch



- Existing CPT III codes for tissue characterization under CT: 0721T & 0722T
- CMS payment for 2 CPTIII codes assigned to New Tech APC 1508 - Level 8 (\$601 - \$700)

Total Medicare Hospital Payment is LDCT \$107 + eyonis LCS \$650

CPT Code	CPT Description	Existing LDCT Images	Hospital Outpatient Payment
71271 APC 5522	Computed tomography, thorax, low dose for lung cancer screening , without contrast material(s)	LDCT	\$107
0721T APC 1508	Quantitative CT tissue characterization , including interpretation and report, obtained <i>without</i> concurrent CT examination of any structure contained in previously acquired diagnostic imaging Do not report 0721T in conjunction with 71271	YES	\$650
0722T APC 1508	0721T but with concurrent CT examination is code 0722T Use 0722T in conjunction with 71271	NO	\$650 + \$107

These two procedures provide an LDCT and tissue characterization & are billed on separate days

The tissue characterization is “added-on” to the LDCT & are billed on the same day

Existing reimbursement creates potential opportunity for ~\$10B TAM⁽¹⁾ – ~14.5M patients at \$650 reimbursement/test

Sources: USPSTF – U.S. Preventive Services Task Force 2021. CMS CY 2023 Medicare Hospital Outpatient Prospective Payment System and Ambulatory Surgical Center Payment System Final Rule.

[1] U.S. TAM Based on a \$650 per procedure reimbursement opportunity & 14.5M estimated population size.

Clear growth strategy designed to expand eyonis' reach

Increase Presence in U.S.



- Additional non-exclusive distribution agreements, IDTF & VA focus
- Leverage KOL partnerships to enable thought leadership across LCS programs
- Initiate health-economics studies to work towards broader, long-term insurance coverage

Drive Traction in Europe



- Achieve eyonis[®] LCS CE marking (expected in Q2:2026)
- Leverage existing non-exclusive distribution agreement to cover Europe
- Focus on larger countries (Germany, France, Italy, Poland) and quick wins

Expand Portfolio



- Training eyonis[®] unique proprietary CAdE/CADx AI algorithm within our platform on additional cancer key indications
- Targets: Incidental Pulmonary Nodules (IPN), HCC (liver cancer), pancreatic cancer, colon cancer, and prostate cancer

iCRO

AI-powered imaging to revolutionize drug development

Our **central imaging services** provide global biopharma customers key data on patient response to therapies from phase I to III oncology studies

Our **Imaging Lab services** drive oncology drug development success with transformative AI insights

iCRO

Empowering Sponsors and CROs to Accelerate the Development and Delivery of Life-Saving Cancer Treatments

A Global Leader in Central and AI Imaging Services for Oncology Clinical Trials

- Leading, end-to-end image management for Phase I to Phase III clinical trials
- Imaging Lab, Median's iCRO enriched offering, drives drug development success with transformative **AI-powered insights**



Select better patients



Predict response to therapy



Accurately monitor disease progression



Rapidly access safety and efficacy

Strong Financial Profile

€23.4M

FY2025 Revenue
Approx. 2% growth YoY

€79.8M

Backlog as of 3/31/26
Approx. 4% growth YoY

Cash Flow Positive⁽¹⁾

[1] iCRO segment as of December 31, 2025.

Strong traction with leading biopharma

Global Footprint:
Across U.S., Europe, and Asia

95+
Biopharmaceutical Clients

7K+
Site Network

Preferred Imaging Services Provider to
2 of the Top 3 Pharma in Oncology

6
Successful FDA Inspections

Successful FDA Inspection in China in 2025

27
Successful Chinese NMPA Inspections

347 Oncology Studies

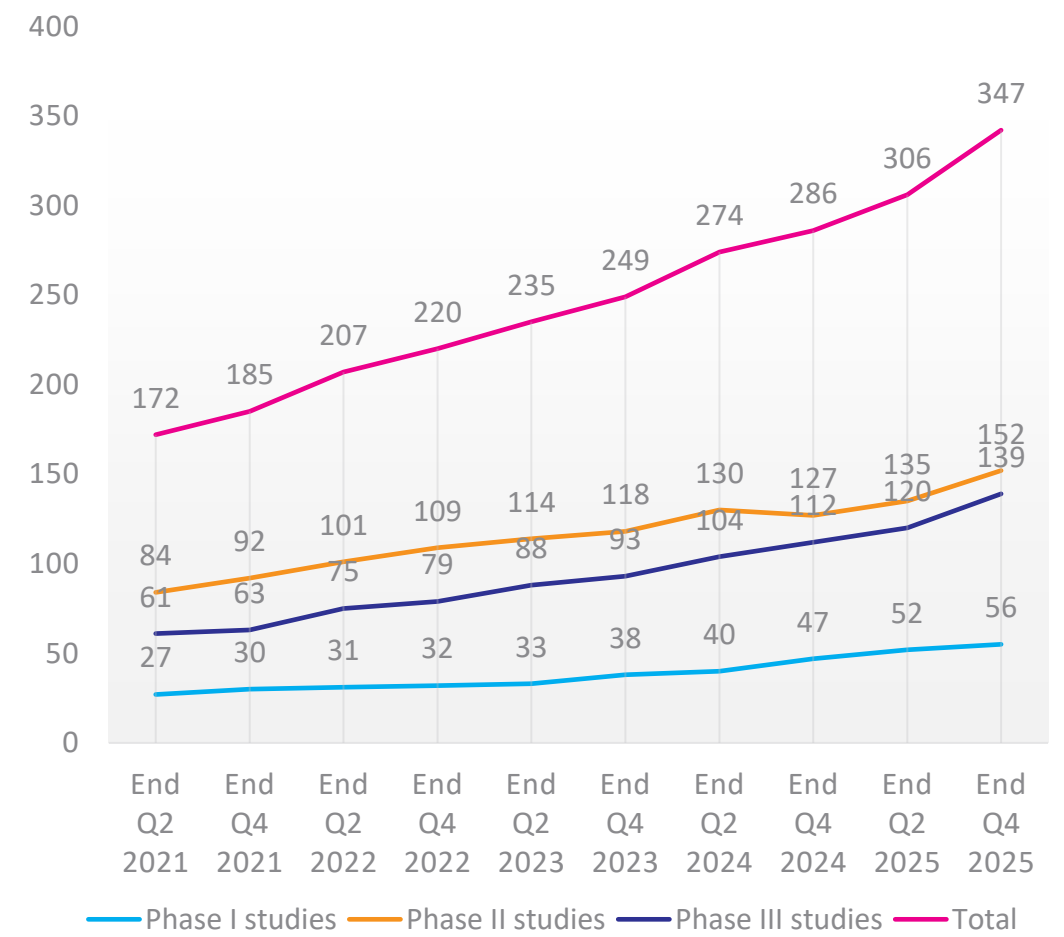
56
Phase I trials

152
Phase II trials

139
Phase III trials

All figures as of March 31, 2026.
Cumulative contracted and less than 12-month awarded studies, since the beginning of the iCRO activity, and until March 31, 2026.

Evolution of Oncology Studies Managed by Median vs Phases



Targets for Leveraging the Transformative Power of Imaging AI for Drug Development

1

Collaborations

Establish AI imaging drug development collaborations with pharma groups

2

Geographical Strategy

EU/U.S.: be selected as preferred provider by big pharma groups, partner with CROs

China: grow market share

3

Operational Focus

Further profitability improvement expected through operational optimization and automation

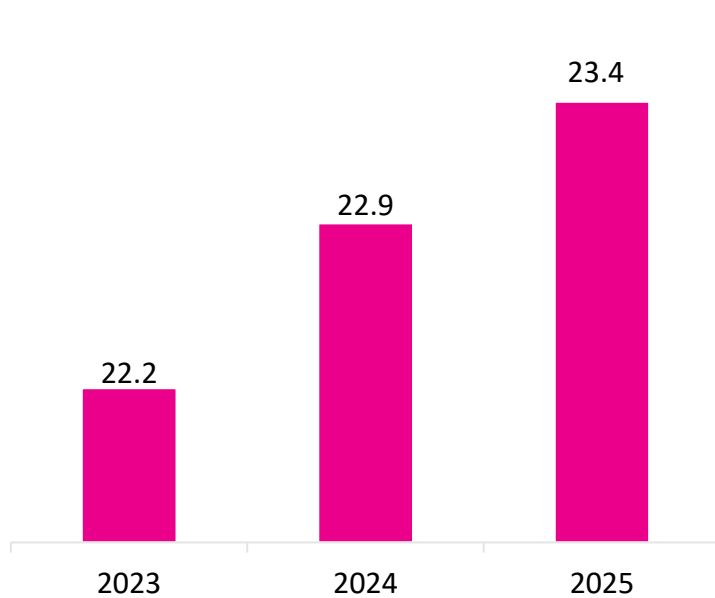
Summary Financials

Continued growth while driving operational efficiency

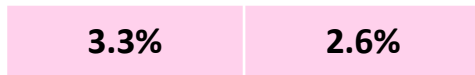
- iCRO business has continued to grow despite strong operational improvements – iCRO segment now cash flow positive⁽¹⁾
- eyonis[®] LCS launch to drive further topline acceleration

[1] Unaudited.

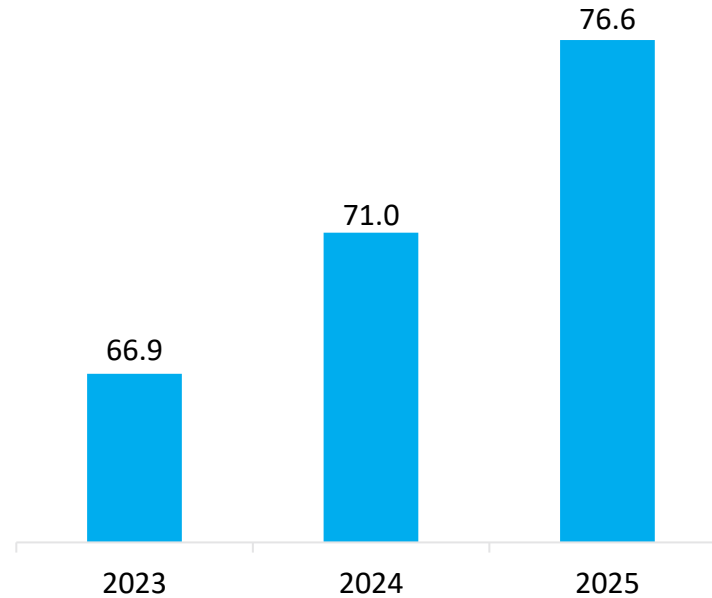
Revenue (€ Millions)



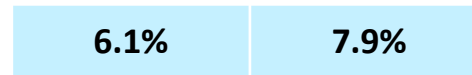
% growth



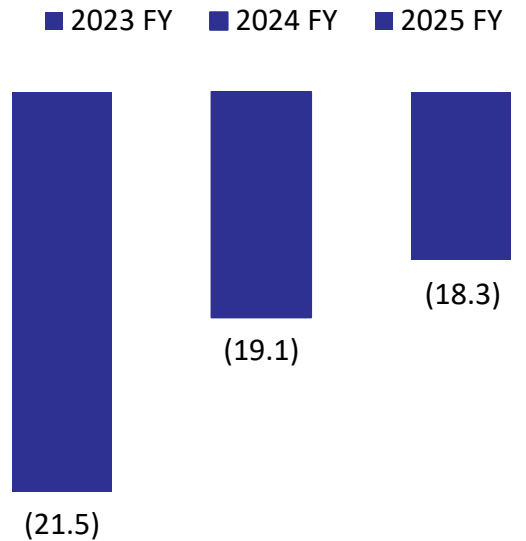
Backlog (€ Millions)



% growth

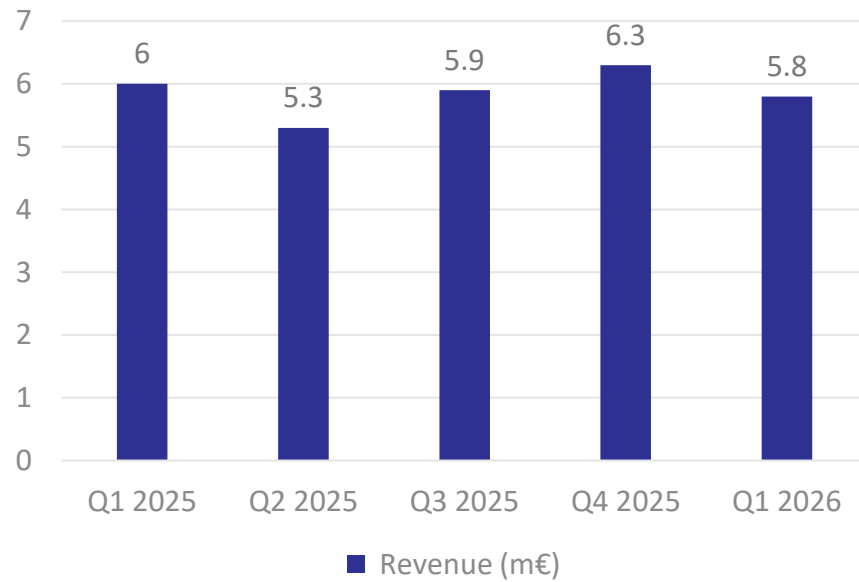


Cash Flow Before Financing Activities (€ Millions)

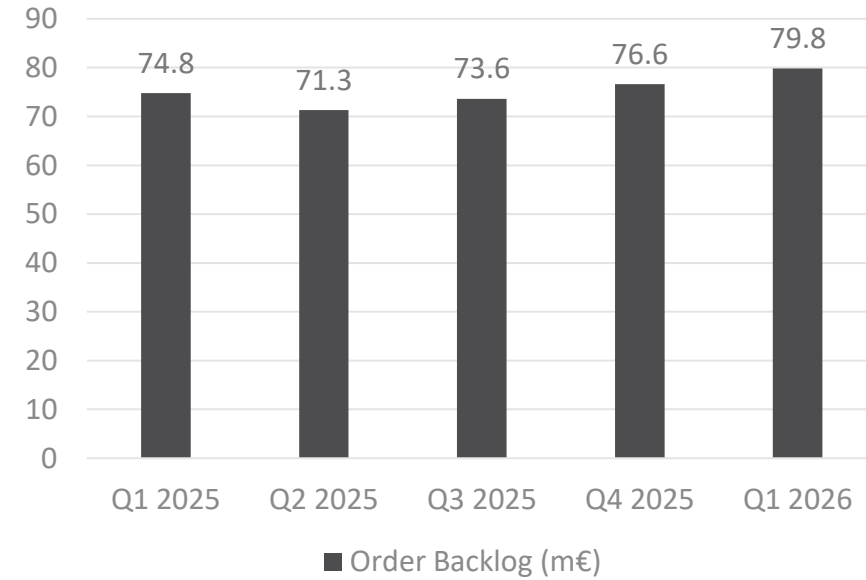


iCRO business: Q1 2026 financial information (unaudited)

Revenue (m€)



Order Backlog (m€)



Investment Highlights

Several features drive investment opportunity

1

More accurate, earlier AI-driven diagnosis through eyonis LCS for lung cancer is now FDA cleared – large market opportunity, exceptional data and well-formulated commercial strategy, including existing reimbursement

2

Providing invaluable clinical insights to medical images along the cancer patient journey, from drug development to patient care

3

Highly validated platform, with 150+ publications, 95+ biopharma customers and marquee partnership with Tempus AI to drive strong commercial traction of eyonis LCS

4

Global operations and customer base – providing better answers to cancer for patients worldwide

5

Highly experienced management team with track-record of successfully developing, commercializing and scaling life sciences solutions

Appendix



Demonstrated clinical strength through two pivotal studies

1- REALITY Standalone Study ClinicalTrials.gov ID: NCT06576232

Study design: Retrospective study, 12 months follow-up; 79.7% stage I, 4.7% stage II, 8.7% stage III, 6.9% stage IV

Sample size: Enriched cohort of 1,147 cases (342 cancer, 805 benign) enrolled in Europe & U.S.

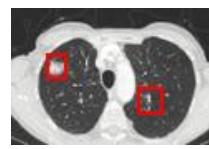
Objectives: Assess SaMD's performance in characterizing cancer positive & negative patients as well as detecting suspicious / malignant on LDCT images

Primary Endpoint: AUROC that measures eyonis LCS performance on patient-level data

eyonis^{LCS}
run
onto raw
cohort



Algorithm analysis



Truthed*
cohort

Compared to

Statistical Analysis

Comparison of truthers ground truth VS. Software as a Medical Device output

Standalone Study Result

2 - RELIVE MRMCC Study ClinicalTrials.gov ID: NCT06751576

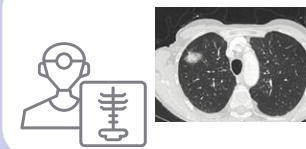
Study design: Two arm, randomized, controlled, blinded, paired-split-plot design study with 4 blocks and 16 readers

Sample size: Enriched cohort of 480 cases (160 cancers, 320 benign) and 16 readers enrolled in Europe & the U.S.

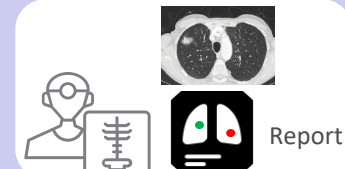
Objectives: Demonstrate that eyonis LCS improves clinician performance in analyzing LDCT lung screening scans

Primary Endpoint: Statistical radiologist performance superior with eyonis LCS report vs. without

Radiologist
without
eyonis^{LCS}



Compared to



Radiologist
with
eyonis^{LCS}

Statistical Analysis

Compared reading with LCS report vs without

MRMC Trial Result



ALMDT
EURONEXT
GROWTH

Our Core Values

Leading innovation with purpose

Combine the spirit of innovation with our passion and conviction to help cure cancer and other debilitating diseases.

Committing to quality in all we do

Be dedicated to quality in everything we do. Quality begins with us and we are committed to it.

Supporting our customers in achieving their goals

Listen to the needs of our customers and help make their goals our goals through our innovation, imaging expertise, superior services, and quality solutions.

Putting the patient first

There is a person at the other end of the images we analyze who is counting on us to do everything we can to help make them healthier.

Follow Us



 [mediantechnologies.com](https://www.mediantechnologies.com)

 [linkedin.com/company/median-technologies](https://www.linkedin.com/company/median-technologies)

 [youtube.com/user/MEDIANTechnologies](https://www.youtube.com/user/MEDIANTechnologies)
