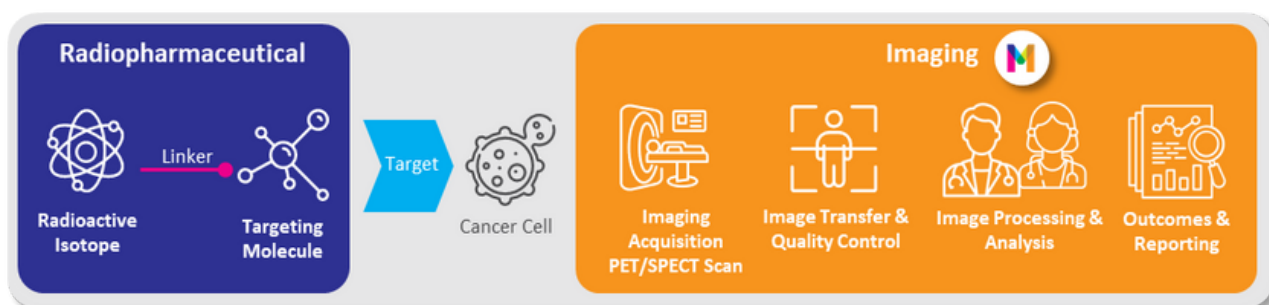




*Radiopharmaceuticals are transforming oncology by enabling precise diagnosis and targeted therapy. At Median, we provide a full suite of imaging services to support radiopharmaceutical development in clinical trials.*



## Key Services

 <b>Service</b>	 <b>Value</b>
<b>Centralized Dosimetry</b>	Delivery of precise, safe radiation doses through an advanced dosimetry system by our in-house nuclear experts. Integrated efficacy reads eliminate rereads, speeding up dosimetry.
<b>Image-Based Pharmacokinetics</b>	Real-time insight into drug distribution and metabolism.
<b>Diagnosis Performance Assessment</b>	High diagnostic accuracy through sensitivity and specificity analysis.
<b>Targeted Radiotherapy Efficacy Assessment</b>	Assessment of treatment effectiveness using advanced imaging biomarkers and oncologic criteria.



## Key Advantages of Partnering with Median

**Complete  
radiopharmaceutical  
imaging solution  
from Phase 0-3**

**Specialized  
Expertise  
Access**

**High-Accuracy  
Dosimetry and  
Radiation Safety**

Median iCRO delivers a comprehensive radiopharmaceutical imaging solution — enhancing safety, speeding decisions, and ensuring compliance.

Median iCRO brings together project teams, nuclear physicists, imaging scientists, and nuclear medicine physicians to deliver in-house dosimetry assessments.

Imaging and calculations determine patient-specific doses to organs and tumors, with advanced dosimetry ensuring superior accuracy.

